



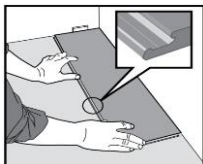
# Laminate Flooring Installation Guide

## Click System

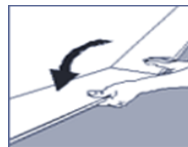
- The widely used formula to calculate the expansion (for floating-system) across the width of the installed floor is 1.5 mm expansion for every 1 meter of floor width.
- We recommend the planks to be installed lengthwise against the longest wall of the room, starting from the corner furthest from the entrance. This will enhance the visual appearance.
- The plank in the last row must not be less than 300 mm. Therefore measure and plan the floor before the installation begins to calculate the first and last plank.
- **REMEMBER: Check your floor continuously** during installation. Installed defective boards can be easily replaced **No claims will be entertained for any plank defects after installation. If in doubt leave it out, or cut it out.**
- When installing the laminate floor through several adjoining-rooms, **expansion-joints must be provided at doorways to allow for normal expansion and contraction. When using the floating-system installation in a corridors and hallways, length-wise installation is required.**
- When the floating-method of installation is used, skirting-boards should be installed by fixing them directly to the adjacent wall, **never fix them onto the floor-boards. This is to allow the floor to move freely without restrictions from skirting or door jambs etc.**
- Your laminate floor is ready to walk on immediately after installation. If the floor requires cleaning after installation please make sure cleaning and maintenance is done as per the instructions detailed below. Any cleaning should be done using only damp-dry mop, **do not use a wet mop/ cloth or steam mop to clean the floor. Excessive moisture can and will damage your new floor.**
- Claims regarding visible defective floor planks must be made prior to installation. **Each plank should be inspected to ensure that the quality is acceptable. No claims relating to surface defects can be accepted after installation.**
- The laminate flooring should not be exposed to direct UV lights / sunlight, please use sun blinds or window / door coverings to protect the floor surface from excessive UV heat exposure. Damage will occur & is not covered by warranty.

## Installation Diagrams

**Cutting tip;** Laminate floors require attention to detail when cutting, if you are using a cross-cut hand saw or electric drop saw, the surface of the plank should be face up to avoid chipping. If you are using a hand held electric sawing device such as a jig saw then it's recommended you place the surface, face down to avoid chipping. This will help you achieve a professional look and keep your plank waste to a minimum.



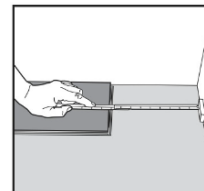
**Fig 1.** First plank, first row. Place a spacer of 12-15 mm thickness to the left and position the plank against the wall. Later, after 3 rows, you can easily position the flooring against the front wall with distances 12-15 mm.



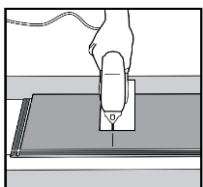
**Fig 2.** Second plank, first row tilt angle & place this plank gently and tight to the short end of the first one. Angle short end into place. Lengthways tap maybe required to secure tightly. **Please make sure both long edges and short ends are tight with no visible gaps.**



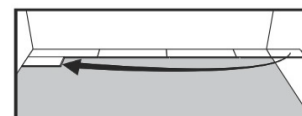
**Fig 3.** Tilt angle the panel down. During the angle process make sure the panels are tight against each other. Afterwards press down or slightly tap down at the short end or long edge of the installed plank till its flat. No major force is or required.



**Fig 4.** At the end of the first row, put a spacer 12 -15 mm, to the wall and measure the length of the last plank to fit.



**Fig 5.** Cut with a jig saw – visual surface face turned down to eliminate/reduce damage to the face panel. Or if cutting using a hand saw, cut it with the visible face up. Then install it as previous plank.



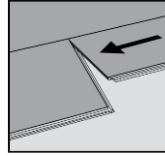
**Fig 6.** Starting the Second row First plank should be a min length of 300-500 mm. Put a 12- 15mm spacer against the wall and measure the last piece. If it is shorter than 500mm a new starter piece should be used. Drop or insert the plank at an angle into the previous row and tap (on the long side) it in using a tapping block till flat.

# Laminate Flooring Installation Guide

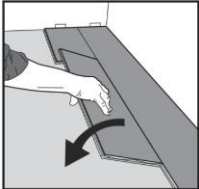
## Click System



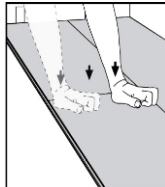
**Fig 7.** General distances between short ends. Minimum distance between short ends of planks in parallel rows shall not be less than 300-500 mm. This improves the stability of the floor.



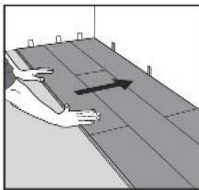
**Fig 8a** Second plank, second row place the panel at an angle into the groove of the previous row making sure that the end of the panel is tight/flush to the short end of the previous panel. Lengthways tap maybe required to flush and secure short end join.



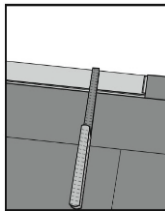
**Fig 8b** Tilt angle the panel down with a slight press to the left to the short end of the previous panel. Again using the tapping block tap it against the long end into the previous row. During the fold /angle down, make sure the panels are tight against each other.



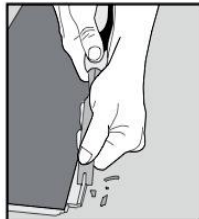
**Fig 8c** As it flattens itself to the floor press or gently tap the top of the short end of the installed panel until its flat. Finish installing this plank by tapping it with a tapping block on the long side to ensure secure installation.



**Fig 9.** After 2-3 rows. Adjust the distance to the front wall by placing spacer's 12-15 mm. Once the adjustment is done against the main wall, continue to install till the last row.



**Fig 10.** Last row (and perhaps also first row). **The Minimum width of the last plank should not be less than 50 mm.** Remember distance to wall is 12-15 mm. Tip! Put a spacer before measuring Cut the panels lengthwise and glue the short ends. See instructions below.

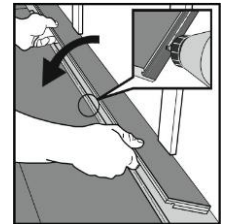


**Diagram 1**

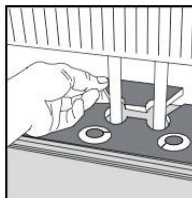
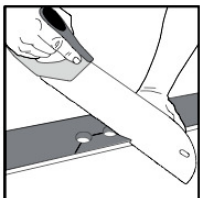
### Special installations - Small panel widths. Diagram 1 & 2

#### For tight spaces under door thresholds or wall ends etc.

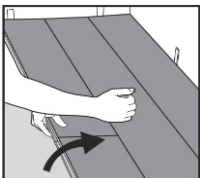
Joining at short ends length cut panels. Cut the tongue at the same time you cut the length of the panel and install as shown above. Please note that the smallest width of a panel is 50 mm at the last row. If it is not, the first row width must be adjusted. This can easily be calculated when measuring the room width before installation. Cut off the locking element with a chisel, push the planks horizontally together. If necessary, place some spacers between the last panel and the wall to keep the planks together during the curing time of the glue.



**Diagram 2**



**Radiator pipes, installation at radiators.** Drill the holes 20 mm larger than the diameter of the pipes. Cut out the panel (with the thinnest blade possible) as per diagram. Install the plank as per normal. Glue the cut out piece back again.



**Disassembling** Your floor can easily be disassembled, which enables replacement during installation and also after installation. Separate the whole row by carefully lifting up and slightly knocking just above the joint. Fold up or angle and release the whole long side. Disassemble the panels by sliding horizontally where possible or fold up and angle to release.



# Laminate Flooring Installation Guide

## Click System

### Care & Maintenance Instructions

You have purchased a high-quality, pre-finished laminate flooring product that does not require any special treatment directly after installation. It's important to note that regular care and maintenance responsibilities are required to better preserve your floor. If you follow these general cleaning and required maintenance guidelines your new floor will perform as intended for many years to come.

- Please ensure that an ideal room-climate is maintained whenever possible. Ideal conditions would provide for approximately, 45-60% Air Humidity and 21-25°C room temperatures. This is a comfortable range for indoor climate and provides for optimal health and assists in the overall performance of the floor.
- **Do not expose laminate flooring to direct sunlight, please use sun blinds or window / door coverings to protect the laminate flooring from excessive UV heat exposure.**
- Daily cleaning should be done with a vacuum cleaner, static mop or a smooth floor-broom. Any sand or dirt should be immediately removed because they can cause scratches and damage the floor surface. Please ensure no metal screws or sharp edges are evident on the vacuum head. Water or food spillage should be cleaned up as soon as possible.
- Whenever necessary, the floor surface can be cleaned with a well-rung damp-dry mop. Do not use conventional household floor cleaning solutions or detergents, they are abrasive and will damage the surface coating. Never use traditional wax or steel-wool on your laminate floor. PH neutral cleaning solutions are required, please observe and follow manufacturer's instructions.
- It is vitally important that you affix felt strips or suitable protection under any furniture-bases, chair-legs and commonly movable objects. At entry points and for high traffic areas the use of floor mats to remove entry grit and dirt is recommended and will be very useful to help preserve your floor surface coating. **Do not drag or push heavy items across the surface of the laminate floor.**
- **Roller or castor chairs should not be used directly on the floor surface.** Protective mats must be placed on the floor surface.
- Additional surface coatings are not required for your pre-finished laminate floor. Once installed it's ready to walk on.
- In case of any plank damage on the surface (e.g. by furniture movement etc.), it is possible to remove damaged planks by pulling up the surrounding area and re-fitting a new plank. Professional advice and assistance from a qualified installer or specialist retailer could assist if the situation arises.



HTT Flooring Pty Ltd

Office: 8322 8924